

Product Identification and Overview

BAPI's Fixed Range Pressure Sensor (FRP) is an economical solution for any cost-conscious application. The FRP features one factory-set pressure range and one factory-set output range. A single button is used to auto-zero the unit.

A colored LED indicates the pressure status:

- Red – over pressure
- Green – top half of span
- Amber – center of span
- Blue – bottom half of span
- Purple – under pressure

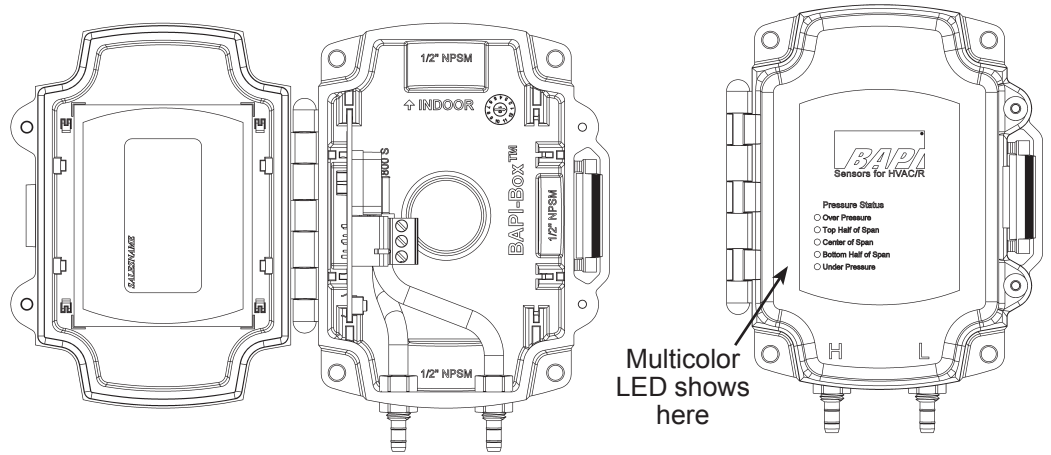


Fig. 1: Fixed Range Pressure (FRP) Sensor, Enclosure Open and Closed.

Mounting

Attach the unit to its mounting surface with four #10 screws through the holes in the mounting feet. The preferred mounting orientation is with the pressure ports facing down.

Notes:

1. Remove Blue Dust Shields from pressure ports before use. Push tubing onto the port nipple. Avoid kinks and holes in the tubing or accuracy will be affected.
2. Mount unit with the pressure fittings on the bottom to prevent condensation from entering the sensor.
3. BAPI recommends using #10 screws that require 5/32" pilot holes
4. Do not mount to a vibrating Surface
5. BAPI's Clean-Cut Tools are designed to cut out the plastic plugs in the 1/2" NPSM threaded ports of the BAPI-Box enclosure. See the Accessories section of BAPI's website or product catalog.

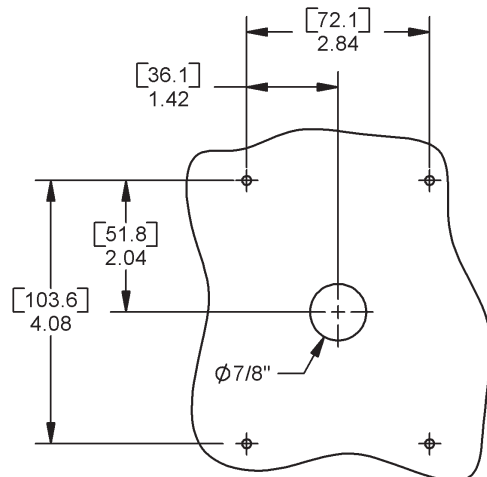


Fig 2: Mounting Hole Pattern

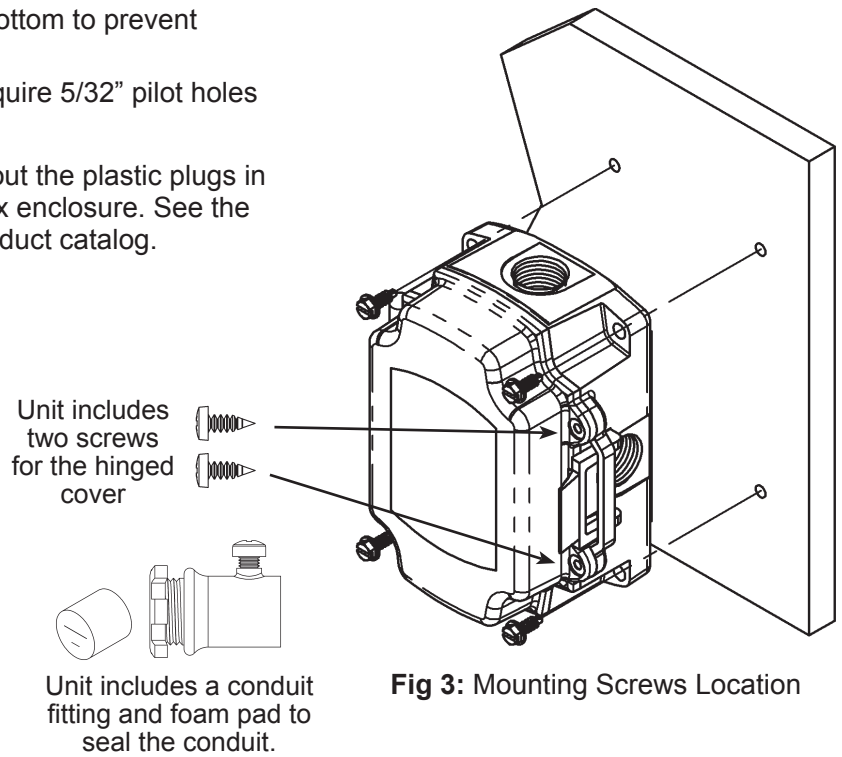


Fig 3: Mounting Screws Location

Specifications subject to change without notice.

